



Parabolic antenna JRB - 25 MIMO

Dual-polarized parabolic antenna JRB – 25 MIMO is designed for directional links at the frequency range 3,5 GHz. It is supplied with the special deep reflector dish which assures increased interference resistance.

Electrical parameters:

Frequency range	3.4 – 3.7 GHz
Gain	25 ± 0.6 dBi
Beamwidth_{-3 dB}	8.5°
Return loss (VSWR)	≤ 1.5
Cross-port isolation	≥ 26 dB
Side lobe level	≤ 15 dB
Front to back ratio	≥ 32 dB
Polarization	Vertical / Horizontal

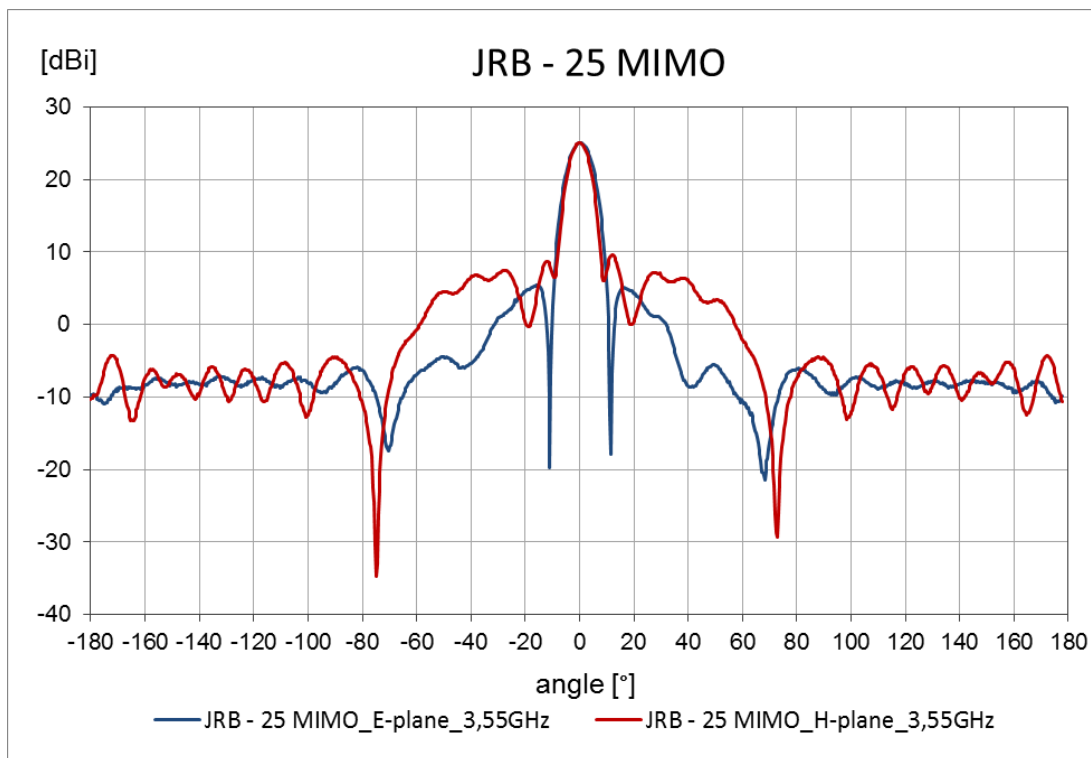
Mechanical parameters:

Parabola	Ø 680 mm, Aluminium alloy
Cover	UV steady plastic ABS
Type of connector	R-SMA
Installation for mast	Ø 27 - 74 mm
Operating wind load	max. 150 km/h
Survival wind load	max. 180 km/h
Shipping dimensions	800 mm x 800 mm x 435 mm
Weight of antenna	10.75 kg

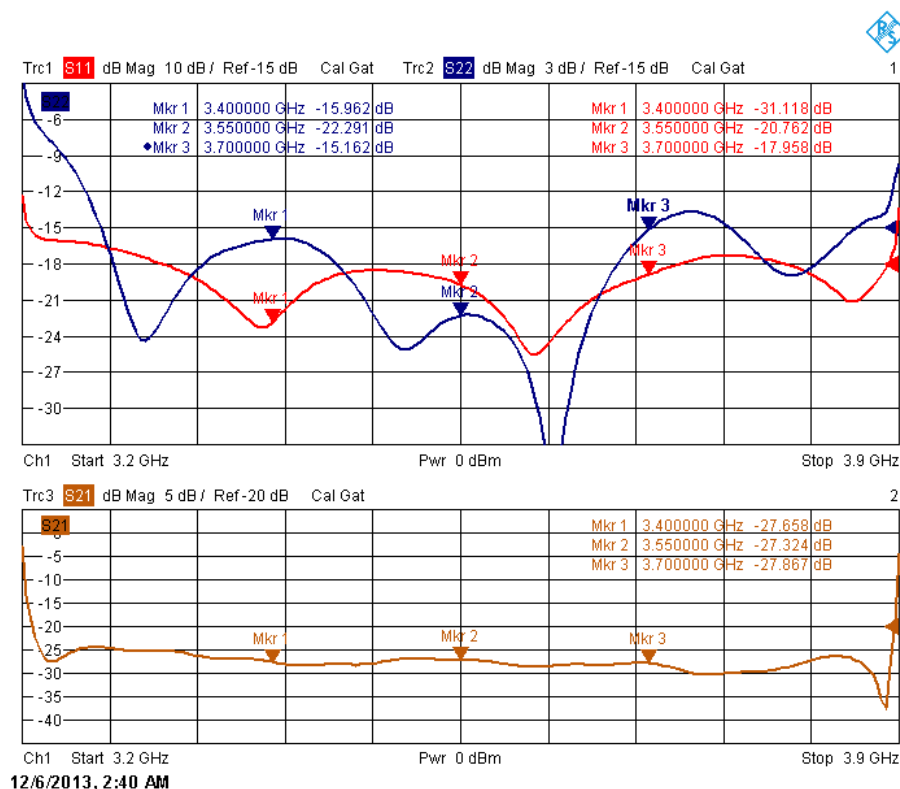
Antenna is supplied together with the bracket, which is possible to set easily in both directions. Antenna is possible to order also with stainless steel bracket. The antenna can be used in combination with an outdoor box GentleBOX JR – 200 for AP, RouterBOARDS and other electronics or with bracket GentleCLIP for easy installation of Rocket M3 or other devices with the same clipped system. (see the pictures below)

Parabolic antenna JRB - 25 MIMO

Measurements of radiation pattern:



The impedance matching and isolation between connectors:



Parabolic antenna JRB - 25 MIMO

Outline:



Fig. 1 Basic antenna design



Fig. 2 Use of antenna with GentleBOX

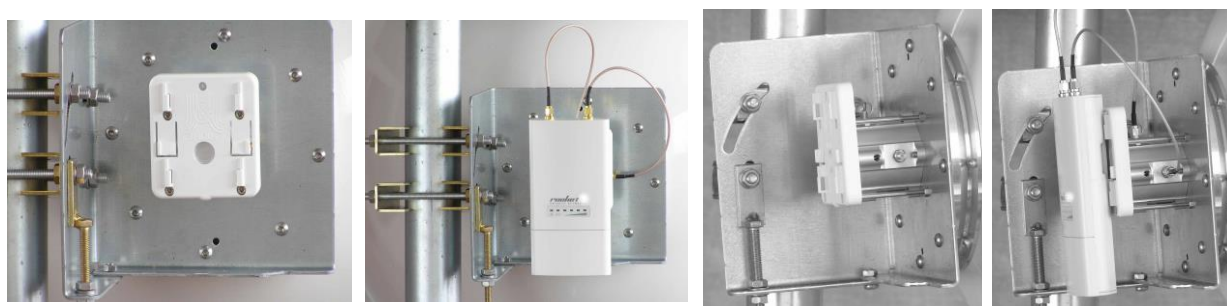


Fig. 3 Use of antenna with GentleCLIP and Rocket M3

Web page: http://en.jirous.com/anteny-3,5ghz/jrb-25_mimo